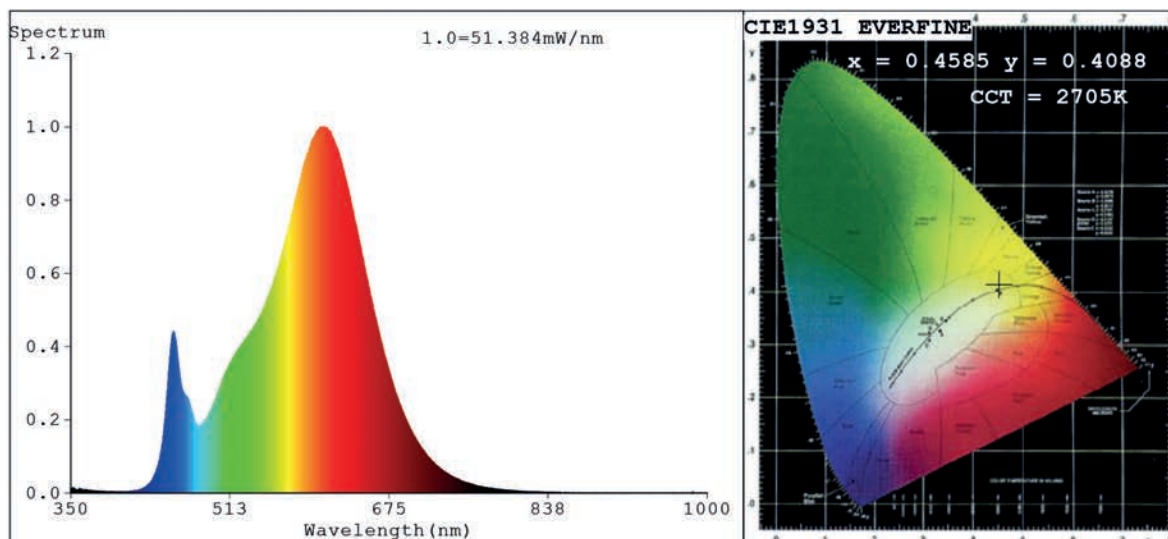


Spectrum Test Report



Color Parameters:

Chromaticity Coordinate: $x=0.4585$ $y=0.4088$ $u'=0.2625$ $v'=0.5264$
 CCT=2705K (Duv=-0.0006) Dominant WL: $\lambda_d = 584.4nm$ Purity=60.3%
 Ratio: R=25.4% G=72.2% B=2.5%; Peak WL: $\lambda_p = 608.5nm$ FWHM=113.0nm
 Render Index: Ra=83.3 CRI=78.8 TM30: Rf=82 Rg=95
 R1 =83 R2 =94 R3 =93 R4 =80 R5 =83 R6 =94 R7 =81
 R8 =58 R9 =11 R10=87 R11=80 R12=77 R13=86 R14=97 R15=75

Photo Parameters:

Flux = 2319 lm Eff. : 145.25 lm/W Fe = 7.223 W

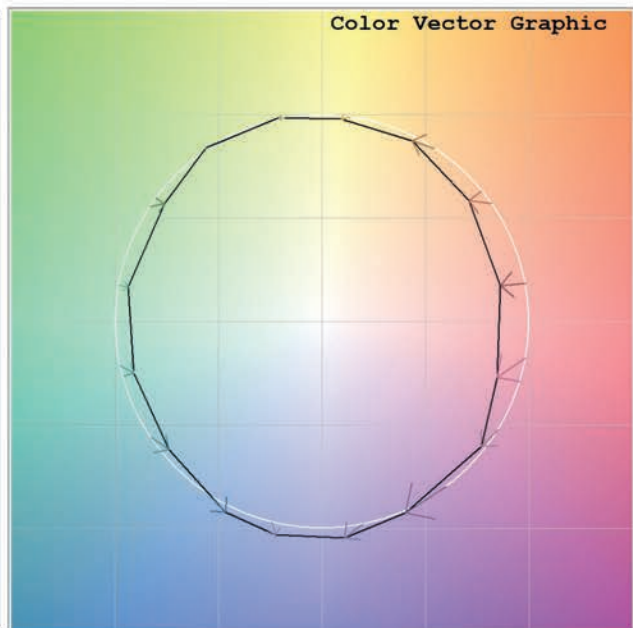
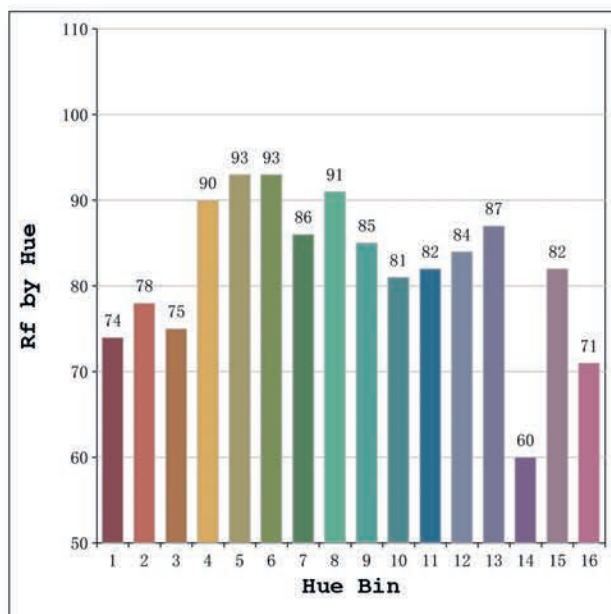
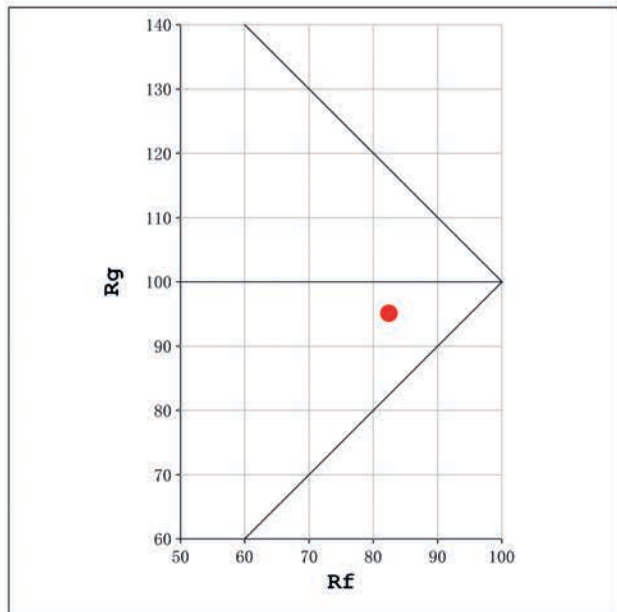
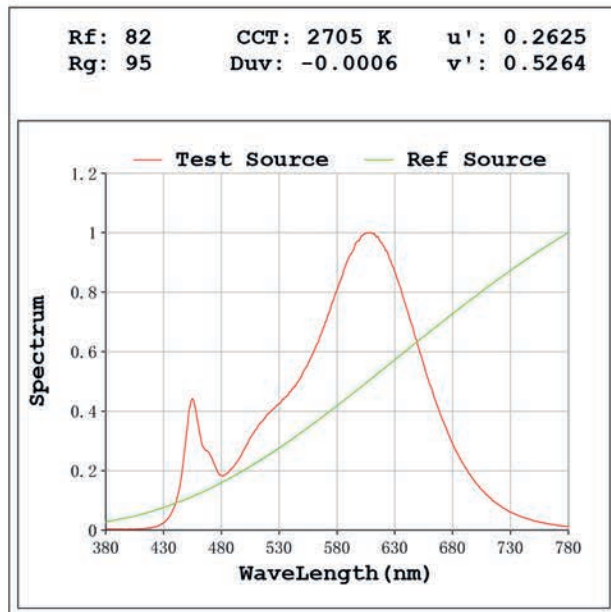
Electrical parameters:

V = 23.998 V I = 0.6653 A P = 15.97 W PF = 1.000

Status: Integral T = 542 ms Ip = 49663 (76%)

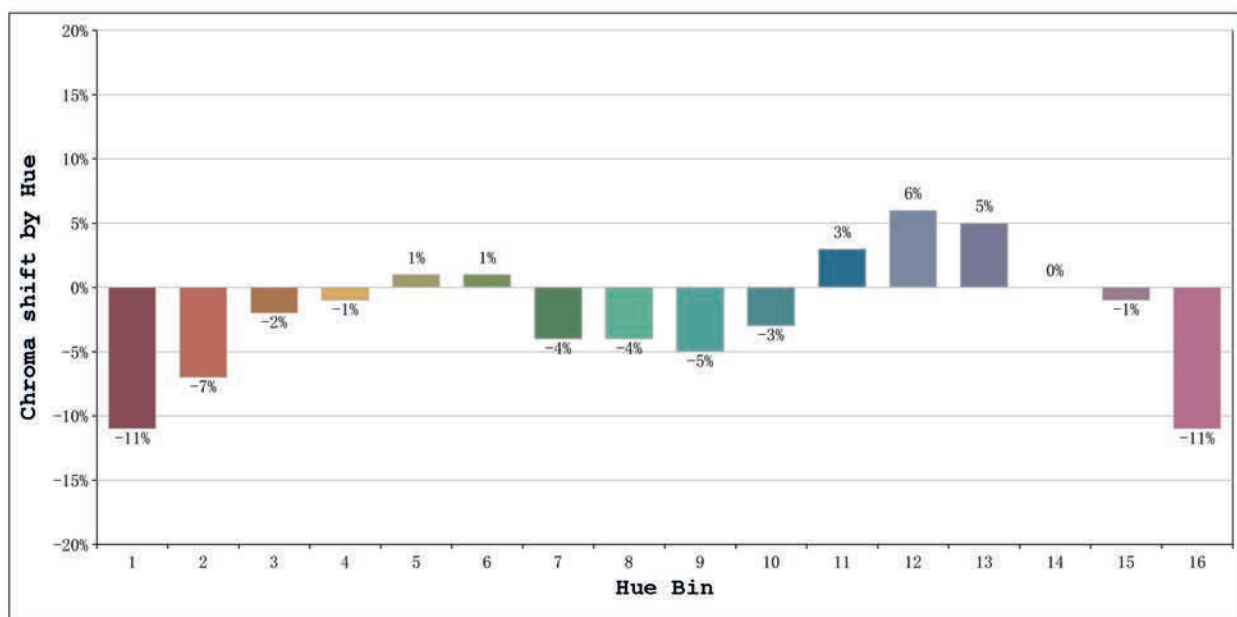
Model: Élite 15 2700k
 Tester: Sergio Carneros
 Temperature: 21Deg
 Manufacturer: Luz Negra S.L

Number: 31.205
 Date: 2025-01-14 14:40:00
 Humidity: 41%
 Remarks: 100cm de tira flexible



Model:Élite 15 2700k
 Tester:Sergio Carneros
 Temperature:21Deg
 Manufacturer:Luz Negra S.L

Number:31.205
 Date:2025-01-14 14:40:00
 Humidity:41%
 Remarks:100cm de tira flexible



			Graphic shift(%)	
Hue Bin	Hue Angle	Rf	Chroma	Hue
1	0.0° - 22.5°	74	-11	1
2	22.5° - 45.0°	78	-7	7
3	45.0° - 67.5°	75	-2	11
4	67.5° - 90.0°	90	-1	4
5	90.0° - 112.5°	93	1	3
6	112.5° - 135.0°	93	1	0
7	135.0° - 157.5°	86	-4	-4
8	157.5° - 180.0°	91	-4	0
9	180.0° - 202.5°	85	-5	5
10	202.5° - 225.0°	81	-3	10
11	225.0° - 247.5°	82	3	10
12	247.5° - 270.0°	84	6	3
13	270.0° - 292.5°	87	5	-9
14	292.5° - 315.0°	60	0	-22
15	315.0° - 337.5°	82	-1	-10
16	337.5° - 360.0°	71	-11	-11

Model:Élite 15 2700k
 Tester:Sergio Carneros
 Temperature:21Deg
 Manufacturer:Luz Negra S.L

Number:31.205
 Date:2025-01-14 14:40:00
 Humidity:41%
 Remarks:100cm de tira flexible